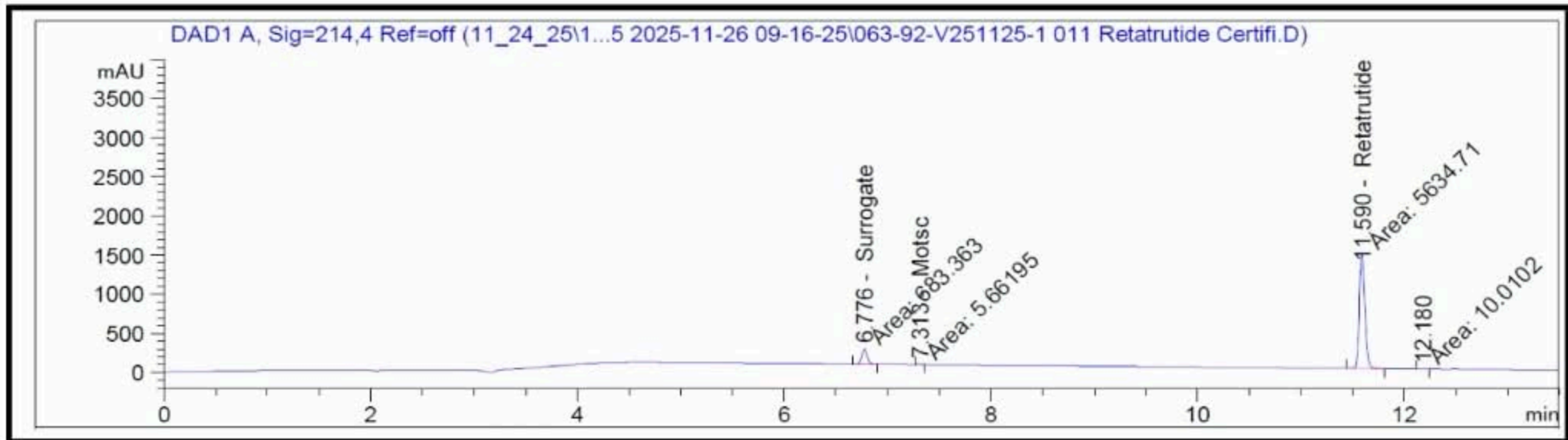


Certificate of Analysis

Retatrutide 10 mg

Compound: Retatrutide
Amount: 10 mg
Laboratory ID: V251125-1 011
Date Reported: 12/19/2025
Lot Number: RET1025
Batch Number: 251005RT1032



Analysis	Method	Result
Chromatographic Purity	HPLC-UV/VIS	99.72% + 0.18%
Assay	HPLC-UV/VIS	10.55 mg




Report By: Dustin Newman, Laboratory Director on 12/19/2025



Approved By: Tori Johnson, Operations Manager on 12/19/2025

Please consult A2LA Certificate #6377.01.01 for a list of accredited tests. Samples were received in acceptable condition. The result(s) in this report relate only to the portion of the sample(s) tested. All analyses were performed consistent with the Vanguard Laboratory Quality Management System. Vanguard Laboratory and its staff did not observe or participate in the sample selection process, and cannot confirm the authenticity of the sample or its representativeness of the associated lot/batch.



Vanguard Laboratory
2635 Parkmont Ln
Olympia, Wa 98502
360-967-7010

Certificate of Analysis

Retatrutide 10 mg

Compound: Retatrutide
Amount: 10 mg
Laboratory ID: V251125-1 011
Date Reported: 12/19/2025
Lot Number: RET1025
Batch Number 251005RT1032

Analyte	Method	LOQ (ppm)	Result (ppm)
Chromium (Cr)	ICP-MS	0.05	ND
Arsenic (As)	ICP-MS	0.01	ND
Cadmium (Cd)	ICP-MS	0.01	ND
Lead (Pb)	ICP-MS	0.01	ND
Mercury (Hg)	ICP-MS	0.005	ND

Run ID: 251126B

Analysis	Method	Result
Endotoxins	LAL	Pass - <0.05 EU/mg*
Sterility	USP <71>	Pass - No Growth Detected

*Pass/Fail criteria based on the USP/FDA threshold of 5 EU/kg (350 EU total for a 70 kg adult)

Report By: Dustin Newman, Laboratory Director on 12/19/2025

Approved By: Tori Johnson, Operations Manager on 12/19/2025

ND: Non-Detect

LOD: Limit of Quantification



Please consult A2LA Certificate #6377.01.01 for a list of accredited tests. Samples were received in acceptable condition. The result(s) in this report relate only to the portion of the sample(s) tested. All analyses were performed consistent with the Vanguard Laboratory Quality Management System. Vanguard Laboratory and its staff did not observe or participate in the sample selection process, and cannot confirm the authenticity of the sample or its representativeness of the associated lot/batch.